



White Eagle
Building Systems

◀ **HANDCRAFTED LOG & TIMBER FRAMED STRUCTURES** ▶

The Weinmaster Plan

4 Bedrooms, 2.5 Baths, 2 Car Garage

606 Ridge Crest Circle
Borden, Indiana, USA 47106
812.246.1444 Office 812.246.1377 Fax
info@WhiteEagleBuildingSystems.com Email

www.WhiteEagleBuildingSystems.com Web

Architectural Package Selections

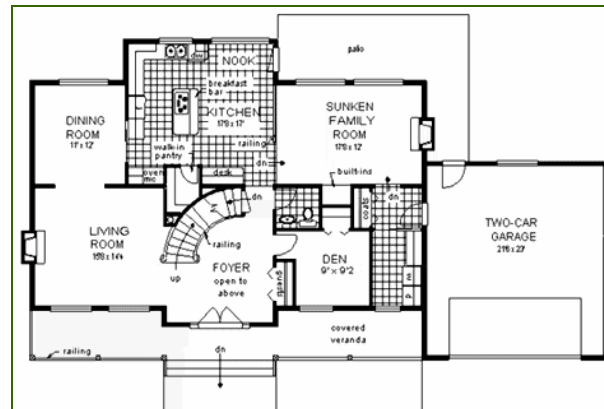
- Handcrafted Log
- Log Post & Beam
- MillCrafted Log
- Timber Framed
- Panelized
- TimberCrafted
- CedarCrafted
- ValueCrafted

Available Services

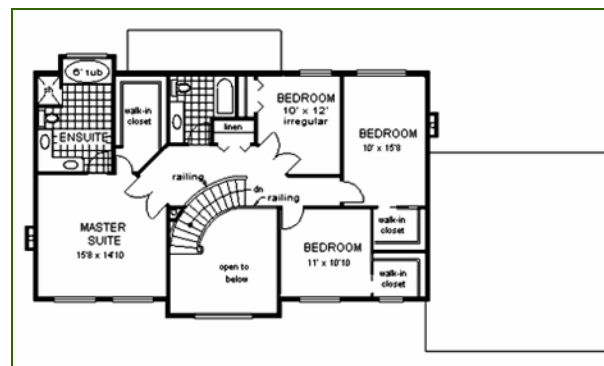
- Architectural Design
- Planning & Budget
- Financial Assistance
- Shell Labor
- Turnkey Construction

Events

- Log Structure Raisings
- Timber Frame Raisings
- Other Shell Raisings
- Planning Seminars
- Open House
- Home Shows



First Floor



Second Floor

Total Area: 2,668 sq. ft., + Porches & Decks
Package Price: Call For Prices

The Weinmaster

A classic & affordable design from White Eagle's popular **CedarCrafted Series**. This two story plan features a spacious design for a larger family. Lots of nice amenities, yet priced very comfortably.

Options include the high performance Enerwall systems, along with Western Red Cedar siding and paneling for a timeless lasting exterior beauty.

From our **Handcrafter's Selection**, premium materials, affordable pricing.