



• HANDCRAFTED LOG & TIMBER FRAMED STRUCTURES •

The Virginia Farms Plan

3 Bedrooms, 3.5 Baths, 3 Car Garage

606 Ridge Crest Circle
 Borden, Indiana, USA 47106
 812.246.1444 Office 812.246.1377 Fax
 info@WhiteEagleBuildingSystems.com Email

www.WhiteEagleBuildingSystems.com Web

Architectural Package Selections

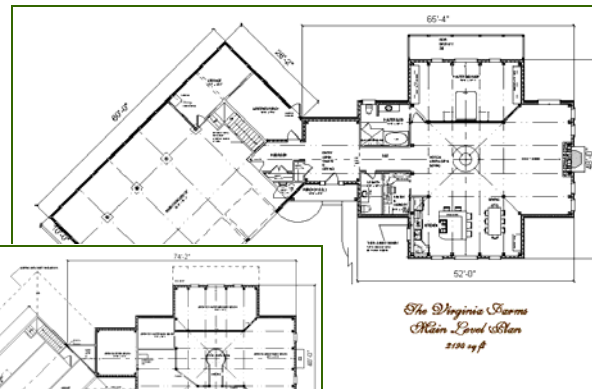
- Handcrafted Log
- Log Post & Beam
- MillCrafted Log
- Timber Framed
- Panelized
- TimberCrafted
- CedarCrafted
- ValueCrafted

Available Services

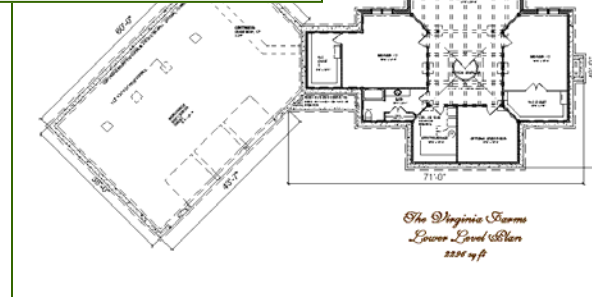
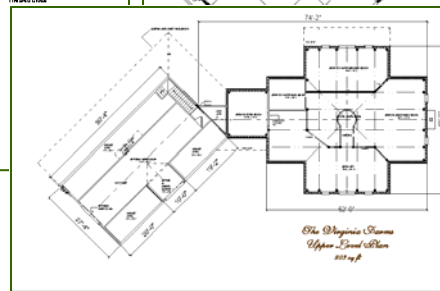
- Architectural Design
- Planning & Budget
- Financial Assistance
- Shell Labor
- Turnkey Construction

Events

- Log Structure Raisings
- Timber Frame Raisings
- Other Shell Raisings
- Planning Seminars
- Open House
- Home Shows



First Floor



Second Floor

The Virginia Farms

A traditional timber framed design from our **Yankee Handcrafter's Series**. This plan offers excellent layout, great curb appeal, and many of the popular amenities today's buyers demand.

Featuring a spacious open three level layout, this plan features complex mortise and tenoned and pegged timber framed joinery throughout.

Offered in both our **Handcrafter's Selection**, and in our affordable **Legacy Selection**.

Total Heated Area: 5,293 sq. ft., + Grg. Bonus Rm.
Package Price: Call For Prices