



White Eagle
Building Systems

◀ **HANDCRAFTED LOG & TIMBER FRAMED STRUCTURES** ▶

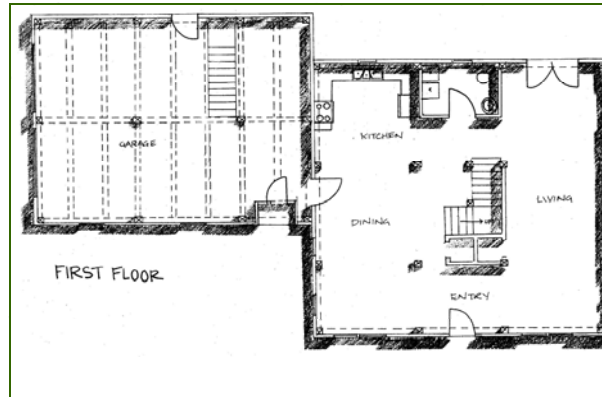
The Saltbox Plan

3 Bedrooms, 2.5 Baths, 2 Car Garage

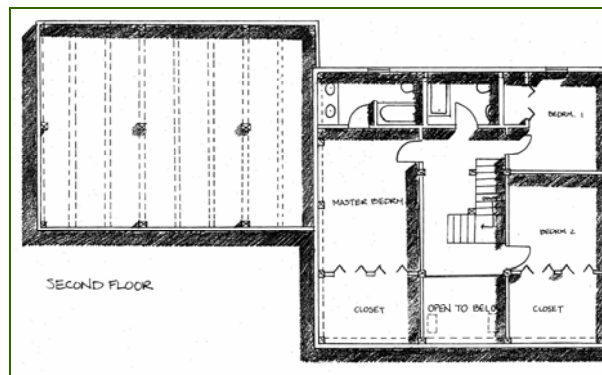
606 Ridge Crest Circle
Borden, Indiana, USA 47106
812.246.1444 Office 812.246.1377 Fax
info@WhiteEagleBuildingSystems.com Email

www.WhiteEagleBuildingSystems.com Web

Timber Frames Series



First Floor



Second Floor

The Saltbox

A classic & affordable design from White Eagle's popular **Timber Framed Series**. This saltbox plan offers the strength and character of hand worked timbers in an open attractive floor plan.

Traditional complex timber framing in mortise & tenon joinery, secured with hardwood pegs. High performance SIPS panels & all quality materials.

From our **Handcrafter's Selection**, premium materials, affordable pricing.

1st Floor: 1,344 sq. ft.
2nd floor: 1,232 sq. ft.

Total Area: 2,576 sq. ft.
Package Price: Call For Prices

Architectural Package Selections

- Handcrafted Log
- Log Post & Beam
- MillCrafted Log
- Timber Framed
- Panelized
- TimberCrafted
- CedarCrafted
- ValueCrafted

Available Services

- Architectural Design
- Planning & Budget
- Financial Assistance
- Shell Labor
- Turnkey Construction

Events

- Log Structure Raisings
- Timber Frame Raisings
- Other Shell Raisings
- Planning Seminars
- Open House
- Home Shows