



◀ HANDCRAFTED LOG & TIMBER FRAMED STRUCTURES ▶

The Plum River Plan

3 Bedrooms, 3.5 Baths, Garage

606 Ridge Crest Circle
 Borden, Indiana, USA 47106
 812.246.1444 Office 812.246.1377 Fax
 info@WhiteEagleBuildingSystems.com Email

www.WhiteEagleBuildingSystems.com Web

Architectural Package Selections

- Handcrafted Log
- Log Post & Beam
- MillCrafted Log
- Timber Framed
- Panelized
- TimberCrafted
- CedarCrafted
- ValueCrafted

Available Services

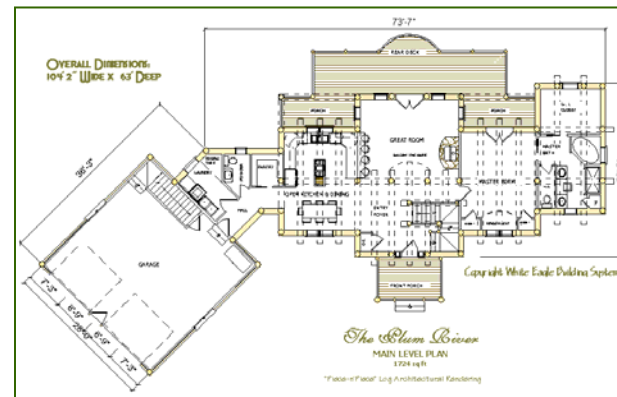
- Architectural Design
- Planning & Budget
- Financial Assistance
- Shell Labor
- Turnkey Construction

Events

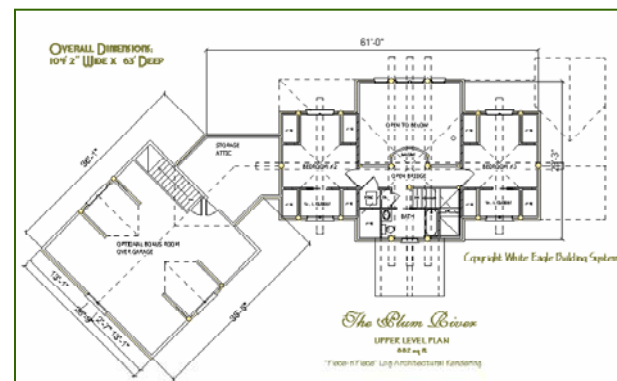
- Log Structure Raisings
- Timber Frame Raisings
- Other Shell Raisings
- Planning Seminars
- Open House
- Home Shows



White Eagle Design: Coming Soon - The Plum River



First Floor



Second Floor

The Plum River

A handcrafted log "piece-n-piece" design from the White Eagle **Yankee Handcrafter's Series**. Amenities include an open kitchen & dining, a vaulted great room & stoned fireplace, & more.

Similar to **The Eagle Creek** (see photo above), but a smaller floor plan with it's own distinctive personality. This new plan has it all!

From our **Handcrafter's Selection**, premium materials, affordable pricing.

1st Floor: 1,724 sq. ft. Total Area: 2,386 sq. ft.
 2nd floor: 662 sq. ft. Package Price: Call For Prices