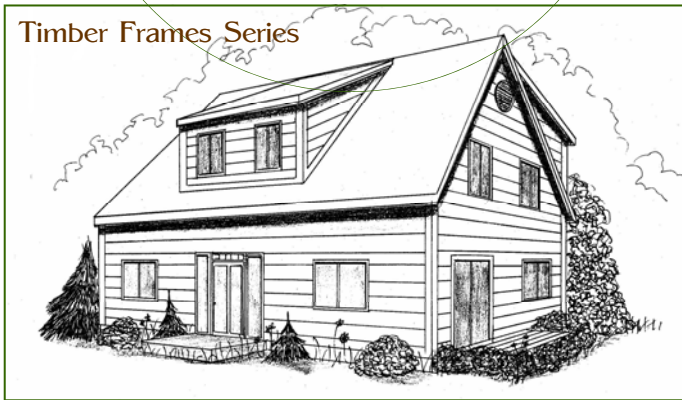




*White Eagle*  
Building Systems

## ◀ HANDCRAFTED LOG & TIMBER FRAMED STRUCTURES ▶

Timber Frames Series

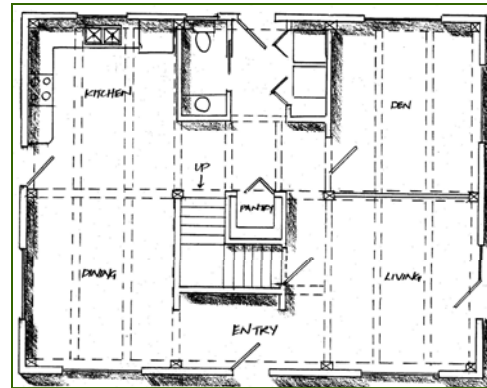


## The Cape 2

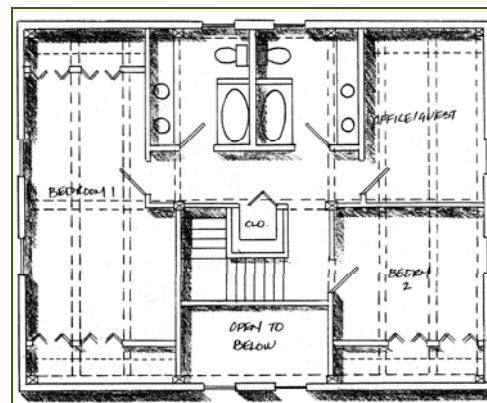
A classic & affordable design from White Eagle's popular **Timber Framed Series**. This cape plan features an open kitchen, & living room, an upper office/guest bedroom, & warm simplistic beauty!

Traditional complex timber framing in mortise & tenon joinery, secured with hardwood pegs. High performance SIPS panels & all quality materials.

From our **Handcrafter's Selection**, premium materials, affordable pricing.



First Floor



Second Floor

1<sup>st</sup> Floor: 1,008 sq. ft    Total Area: 1,832 sq. ft.  
2<sup>nd</sup> floor: 824 sq. ft.    Package Price: Call For Prices

## The Cape 2 Plan

2-3 Bedrooms, 2.5 Baths

606 Ridge Crest Circle  
Borden, Indiana, USA 47106  
812.246.1444 Office 812.246.1377 Fax  
info@WhiteEagleBuildingSystems.com Email

www.WhiteEagleBuildingSystems.com Web

## Architectural Package Selections

- Handcrafted Log
- Log Post & Beam
- MillCrafted Log
- Timber Framed
- Panelized
- TimberCrafted
- CedarCrafted
- ValueCrafted

## Available Services

- Architectural Design
- Planning & Budget
- Financial Assistance
- Shell Labor
- Turnkey Construction

## Events

- Log Structure Raisings
- Timber Frame Raisings
- Other Shell Raisings
- Planning Seminars
- Open House
- Home Shows