



White Eagle
Building Systems

◀ **HANDCRAFTED LOG & TIMBER FRAMED STRUCTURES** ▶

Timber Frames Series

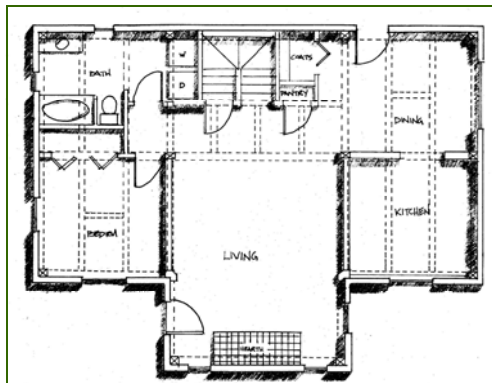


The Bennett

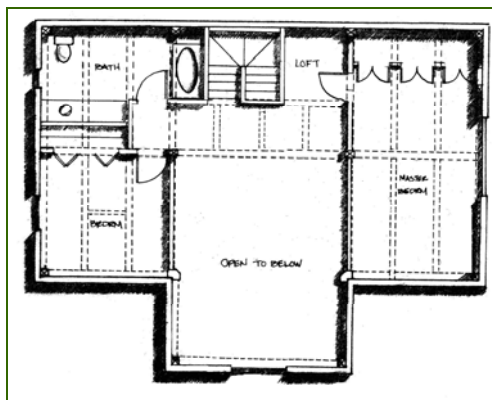
A classic & affordable design from White Eagle's popular **Timber Framed Series**. This quaint cape plan offers a very comfortable layout, with the large vaulted living room central to all areas.

Traditional complex timber framing in mortise & tenon joinery, secured with hardwood pegs. High performance SIPS panels & all quality materials.

From our **Handcrafter's Selection**, premium materials, affordable pricing.



First Floor



Second Floor

1st Floor: 1,400 sq. ft. Total Area: 2,424 sq. ft.
2nd floor: 1,024 sq. ft. Package Price: Call For Prices

The Bennett Plan

3 Bedrooms, 2 Baths

606 Ridge Crest Circle
Borden, Indiana, USA 47106
812.246.1444 Office 812.246.1377 Fax
info@WhiteEagleBuildingSystems.com Email

www.WhiteEagleBuildingSystems.com Web

Architectural Package Selections

- Handcrafted Log
- Log Post & Beam
- MillCrafted Log
- Timber Framed
- Panelized
- TimberCrafted
- CedarCrafted
- ValueCrafted

Available Services

- Architectural Design
- Planning & Budget
- Financial Assistance
- Shell Labor
- Turnkey Construction

Events

- Log Structure Raisings
- Timber Frame Raisings
- Other Shell Raisings
- Planning Seminars
- Open House
- Home Shows