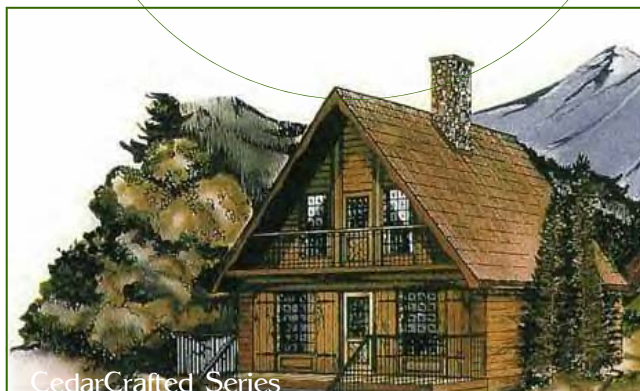




*White Eagle*  
Building Systems

◀ **HANDCRAFTED LOG & TIMBER FRAMED STRUCTURES** ▶

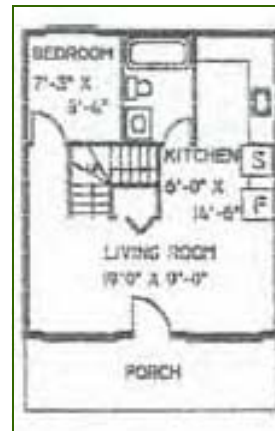


## The Algonquin

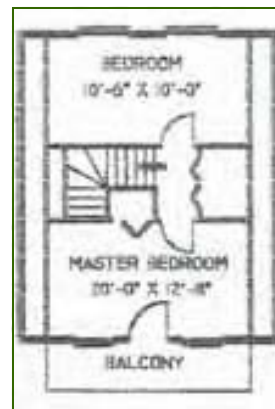
A classic & affordable design from White Eagle's popular **CedarCrafted Series**. This plan features a compact floor plan, perfect for modest budgets, or perhaps a weekend getaway in the woods.

Options include the high performance Enerwall systems, along with Western Red Cedar siding and paneling for a timeless lasting exterior beauty.

From our **Handcrafter's Selection**, premium materials, affordable pricing.



First Floor



Second Floor

**Total Area:** 864 sq. ft., + Porches & Decks  
**Package Price:** Call For Prices

### The Algonquin Plan

**3 Bedrooms, 1 Bath**

606 Ridge Crest Circle  
Borden, Indiana, USA 47106  
812.246.1444 Office 812.246.1377 Fax  
info@WhiteEagleBuildingSystems.com Email

www.WhiteEagleBuildingSystems.com Web

#### Architectural Package Selections

- Handcrafted Log
- Log Post & Beam
- MillCrafted Log
- Timber Framed
- Panelized
- TimberCrafted
- CedarCrafted
- ValueCrafted

#### Available Services

- Architectural Design
- Planning & Budget
- Financial Assistance
- Shell Labor
- Turnkey Construction

#### Events

- Log Structure Raisings
- Timber Frame Raisings
- Other Shell Raisings
- Planning Seminars
- Open House
- Home Shows